



REGIONAL POST-GRADUATE TRAINING SCHOOL OF INTEGRATED MANAGEMENT OF
TROPICAL FORESTS AND LANDS

- ERAIFT -

UNESCO Category II center



<http://www.eraift-rdc.org>

Watsapp: +27 810381394

Mail :

baudouin.michel@uliege.be

15 – 17 May 2024 |
Kuala Lumpur,
Malaysia

International Symposium of the Category 2 Institutes and Centres under the auspices of UNESCO in the field of Natural Sciences

I. FOUNDATION OF ERAIFT

The foundations of ERAIFT(1999) are rooted in the approaches used by the **Man and the Biosphere Programme** (MAB) and its global network of biosphere reserves

The systems approach :

- Participatory
- Interdisciplinary
- Global and Integrated

constitutes the pedagogical and conceptual basis of ERAIFT



Mail:

baudouin.michel@uliege.be

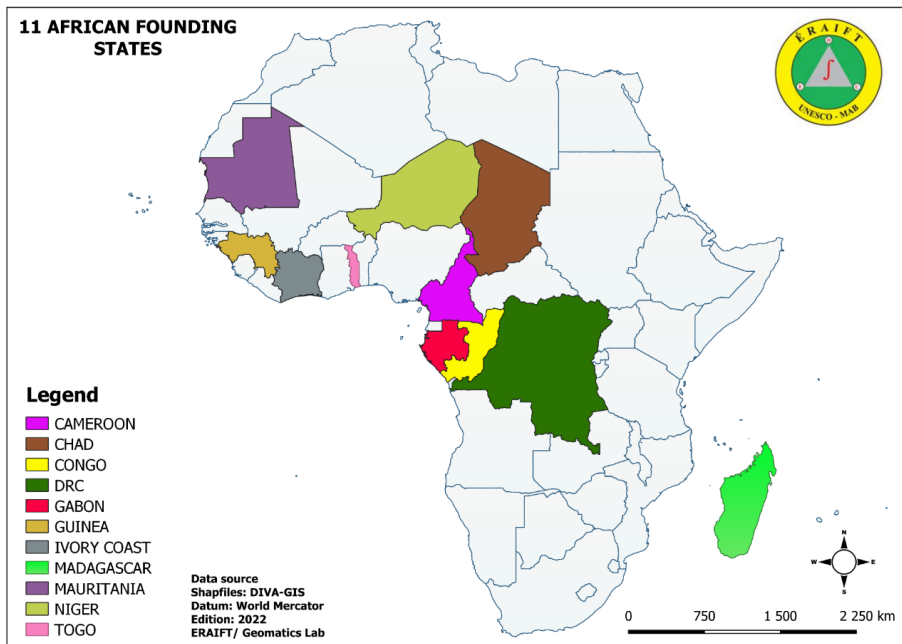
Watsapp: +27 810381394

II. STRUCTURE AND GOVERNANCE

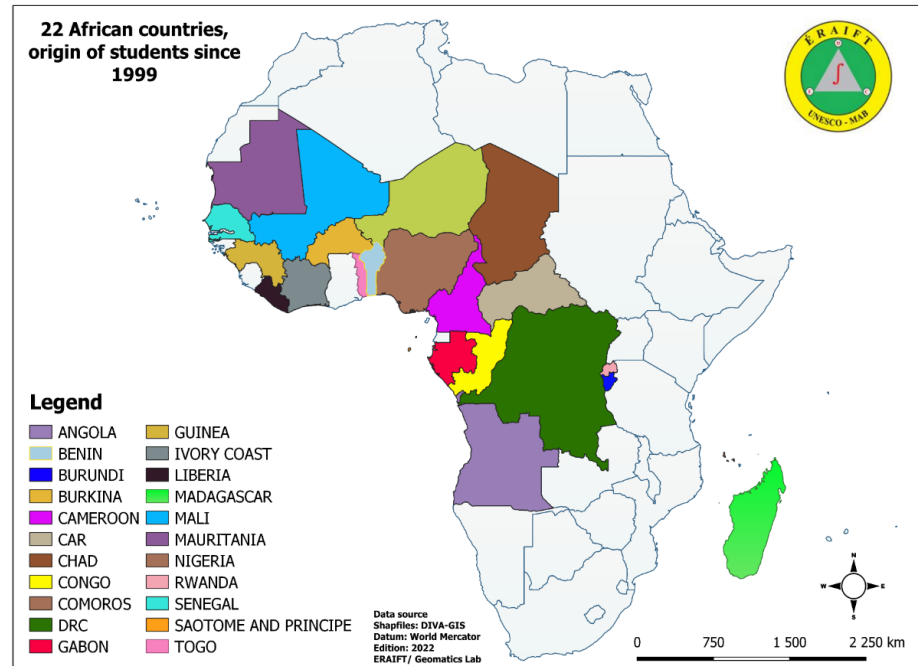
2.1. ERAIFT International Governance Bodies

1. The Conference of Member States
2. The Board of Directors (BoD)
3. The Academic and Research Council (ARC)
4. The Management

2.2. The 11 African founder states

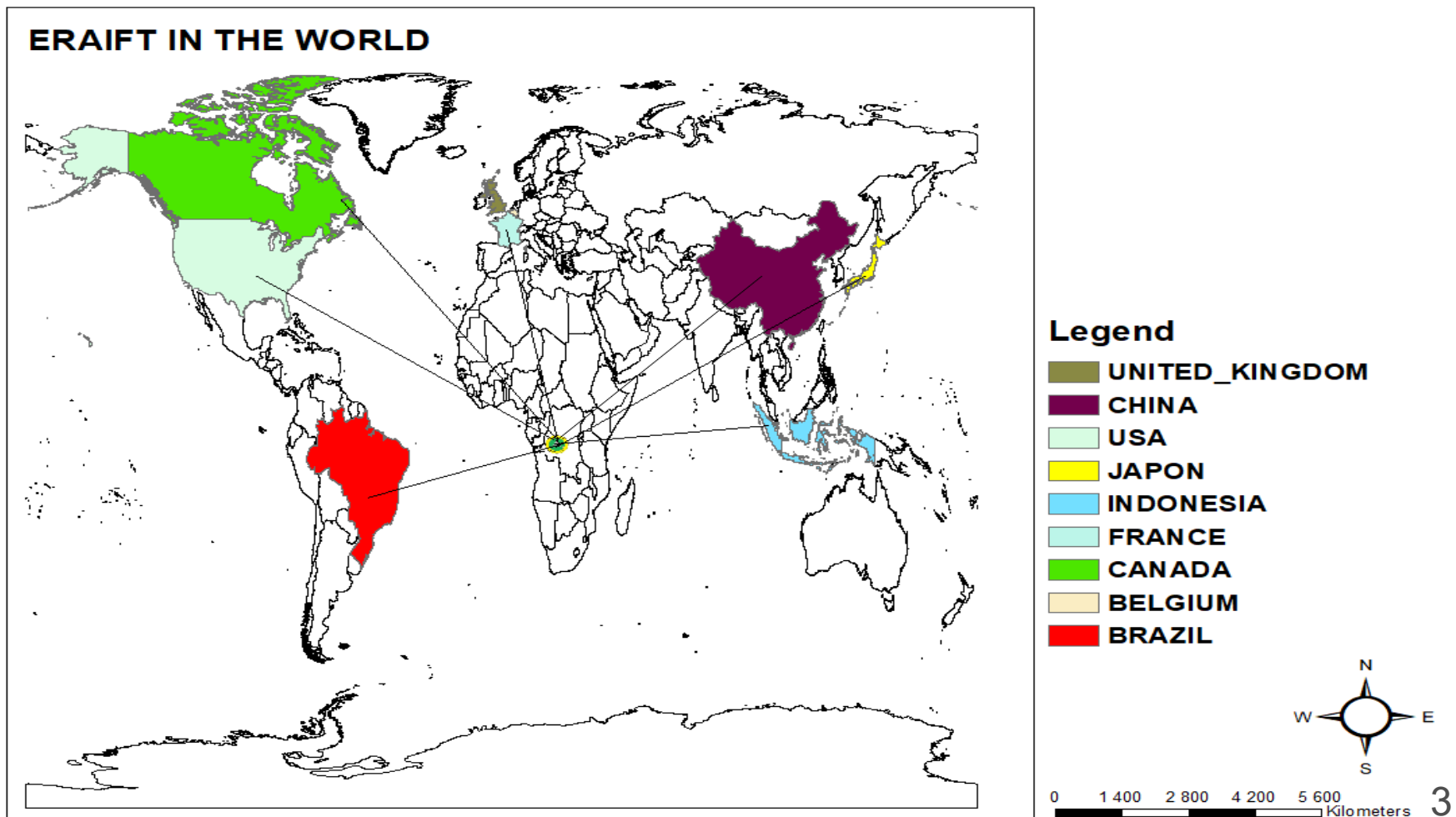


2.3 The 22 Associate Countries



II. STRUCTURE AND GOVERNANCE

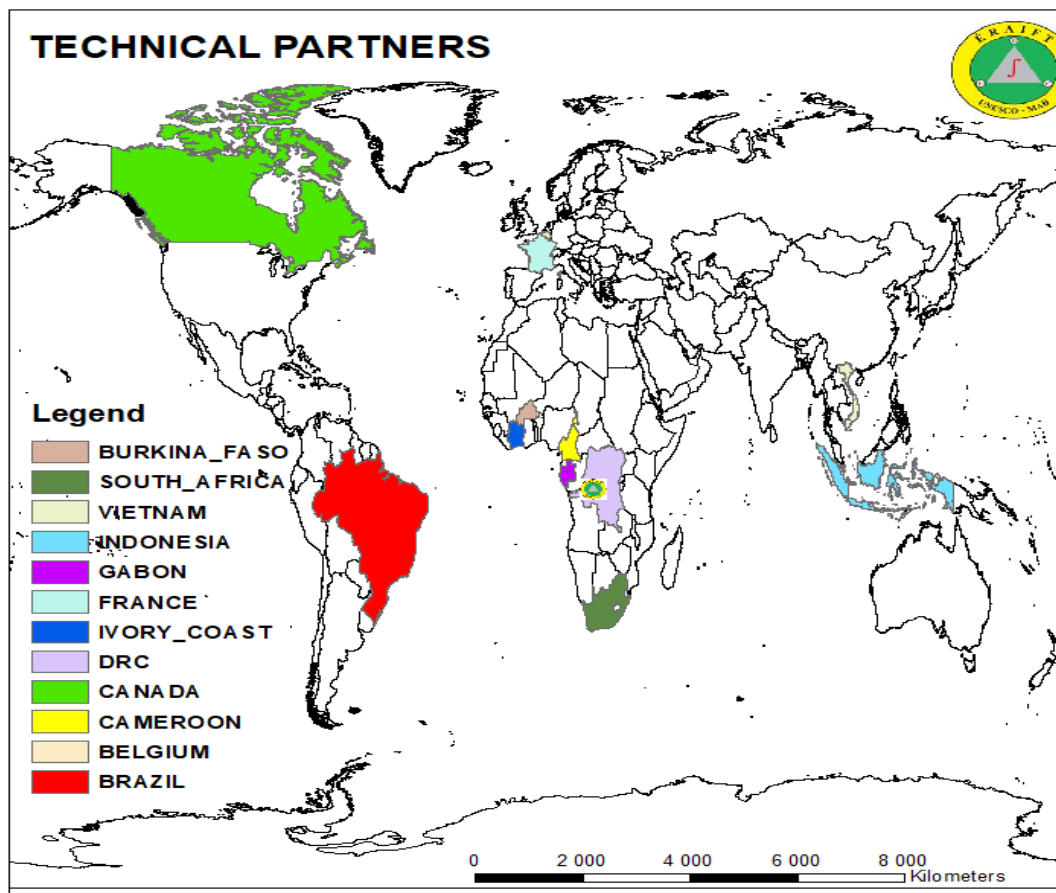
2.4 ERAIFT in the world



III. TECHNICAL AND FINANCIAL PARTNERS

3.1 Technical Partners

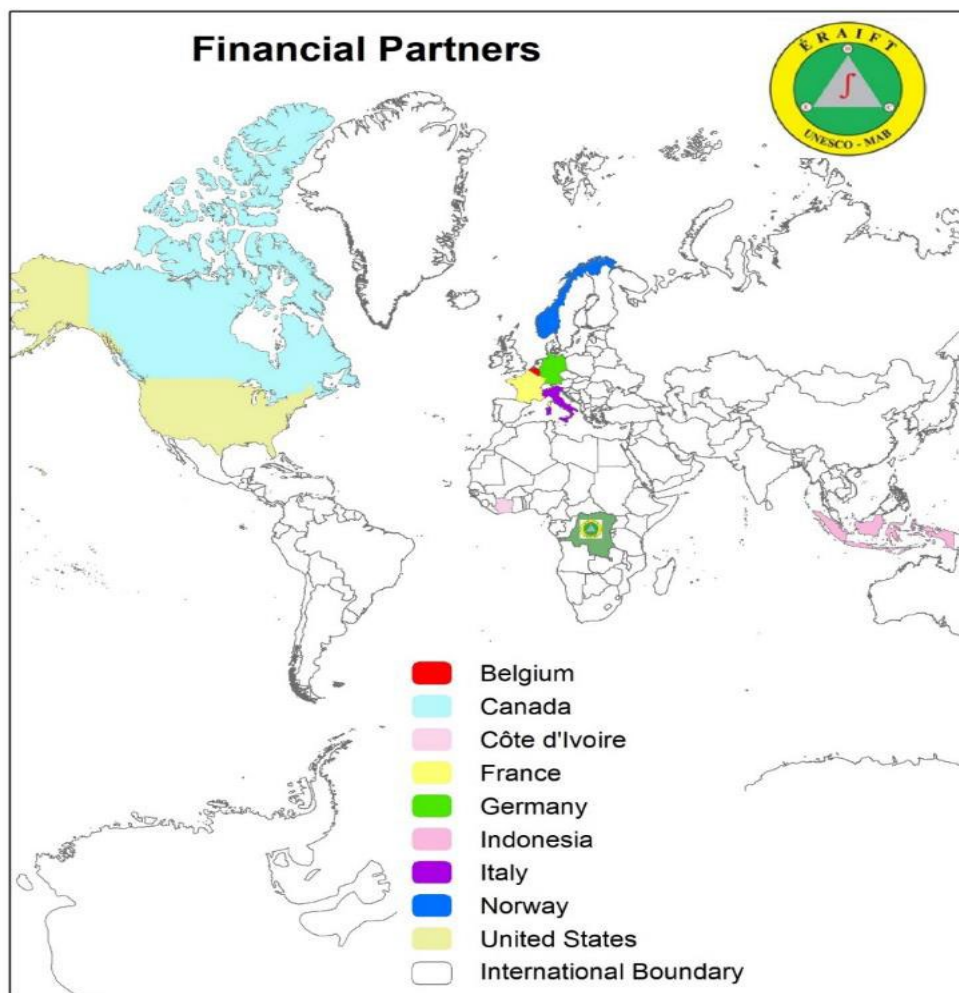
TECHNICAL PARTNERS



N°	COUNTRY	PARTNER
1	BELGIUM	Ullège and Gembloux Agrobio Tech
2		Meise Botanical Garden
3		UGent
4		IRSNB (Institut Royal des Sciences Naturelles de Belgique)
5		MRAC (Royal Museum of Central Africa)
6	BURKINA	CAMES
7	BRAZIL	Federal University of Para
8	CAMEROON	RIFFEAC
9		Dschang, Yaoundé, EFG
10	CANADA	Uaval
11	CHINA	HIST (International center on Space and technologies for Natural and Cultural Heritage)
12	DRC	ICCN (Institut Congolaise de la Conservation de la Nature)
13		INERA (Institut National pour l'Etude et la Recherche Agronomiques)
14		UNIKIS (Université de Kisangani)
15		FIB (Fédération des Industriels du Bois)
16		UNILU (Université de Lubumbashi)
17		Groupe D'initiative pour l'Agroforesterie en Afrique
18		OSFAC
19	FRANCE	Université Paris-Est Marne La Vallée
20		ATIBT (Association technique Internationale de bois Tropicaux)
21		Visio terra
22		CIRAD
23	GABON	USTM (Université des sciences et techniques de Masuku)
24		ENEF (Ecole nationale des eaux et forêts)
25	INDONESIA	Indonesia Institute of Sciences
26		CIFOR
27	IVORY COAST	CRE
28	VIETNAM	Hanoi University of Agriculture
29	SOUTH AFRICA	South African Wildlife College (SAWC)

III. TECHNICAL AND FINANCIAL PARTNERS

3.2 Financial Partners



No	Country	Partner
1	Belgium	EU
2		AWAC
3		PACODEL
4		Meise Botanic Garden
5		UGENT
6		Belgian Development Coope-
7		WBI
8	Canada	AUF
9	France	CIRAD
10		UNESCO
11	Germany	GIZ
12	Indonesia	CIFOR
13	Italy	FAO
14	Ivory Coast	ADB
15	Norway	RFN
16	UK	WCMC
17	USA	USFS
18		WWF
19		WCS



IV. ERAIFT IN FIGURES

22 countries involved

Regional Master's programs

>>> Registered: 445

>>> Graduates: **333**

Doctorate (PhD)

>>> Registered: 59

>>> Graduates: **21**

Master students in training

83

PhD students in training

27

ERAIFT - FOUR JOBS

- 1) Diploma course
- 2) Continuing education
- 3) Action-oriented research (research – development)
- 4) Support for the formulation, monitoring and evaluation of projects/programs/policies

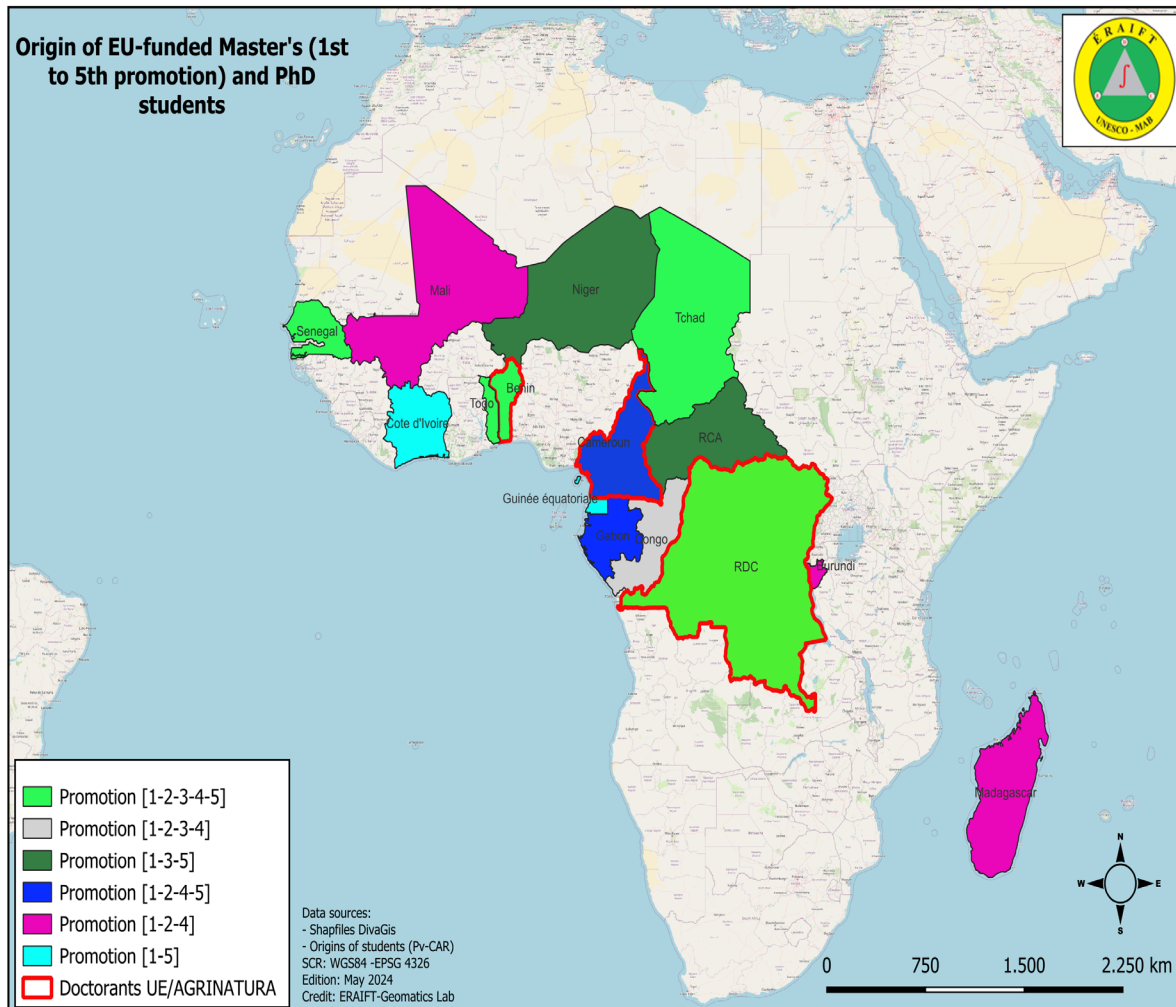
V. REGIONAL DIPLOMA COURSES

5.1. Regional Masters: 4 tracks

- Pro Master in protected areas management (**GAP**)
- Pro Master in forest management techniques (**TAF**)
- Pro Master in Biosphere Reserve Management (**GRB**)
- Research Master in Integrated Management of Tropical Forests and Lands (AGIFT)

5.2. Philosophiæ Doctor (PhD)

- Former cohort: 13 PhD students
- New cohort: 14 PhD students (all EU/Agrinatura scholarship awardees)





VI. CONTINUOUS TRAINING AT REGIONAL AND NATIONAL LEVELS

✓ **500 people trained each year on the following themes**

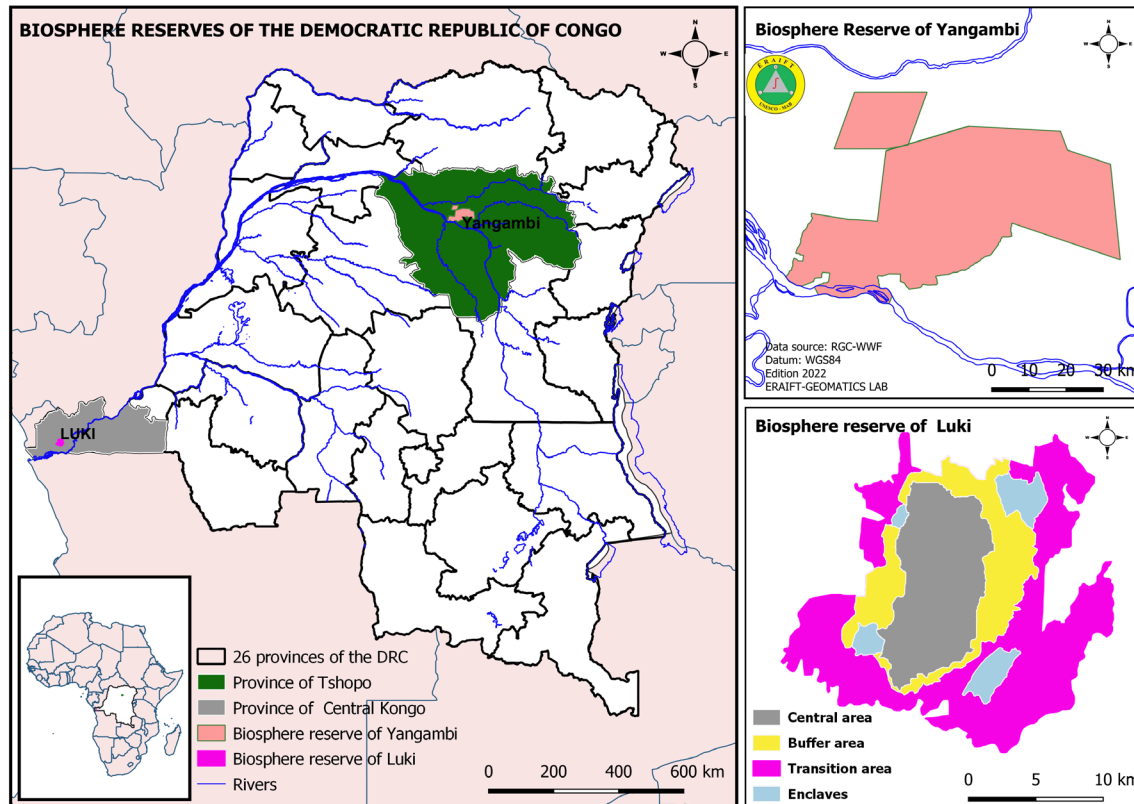
- Financial, economic and environmental analyses of projects and programmes;
- Design, planning, implementation of development projects and programmes;
- Management of Protected Areas;
- Analysis of sustainable agricultural value chains
- Applied ecology;
- Land and tropical forest management;
- Contribution of remote sensing and GIS tools to the ongoing monitoring of ecosystems and areas of interest of projects and programmes;
- Scientific research applied to natural resource development and management;
- Environmental governance.

✓ **Somme Training activities for this year 2024**

- Analysis of sustainable agricultural value chains (18-21 March 2024);
- Fund raising for Research and Development Projects (April 22-26, 2024);
- Results-Based Management in Protected Areas (date to be specified);
- Advanced processing of SAR (Synthetic Aperture Radar) data (10 - 15 June 2024);
- GIS, digital mapping and geospatial analysis (date to be specified);
- MOOCs in MAB Programme and Biosphere Reserve Management (date to be specified);

VII. RESEARCH-ACTION ACTIVITIES IN THE TWO BIOSPHERE RESERVES (LUKI AND YANGAMBI)

- 1° Project "Yangambi, scientific pole at the service of man and forests or YPS".



- ✓ **Installation of a flux tower for the measurement of greenhouse gases**

VII. RESEARCH-ACTION ACTIVITIES IN THE TWO BIOSPHERE RESERVES (LUKI AND YANGAMBI)

✓ Capacity building for researchers in Yangambi

'A la carte' training



Research scholarships



✓ Information and sensitization of local populations and decision makers on environmental diplomacy

VII. RESEARCH-ACTION ACTIVITIES IN THE TWO BIOSPHERE RESERVES (LUKI AND YANGAMBI)

➤ 2° PROJECT at LUKI BIOSPHERE RESERVE

Green Alliance with local communities
through implementation of
Landscape-scale Intervention
in Kongo Central
DR Congo



➤ 3° Project "Scientific and technical support for the sustainable management of tropical forests based on the rights of Local Communities (LC) and Indigenous Peoples (IP) in DRC"



VIII. DECISION SUPPORT TOOLS

ERAIFT has developed in-house expertise to provide policy makers and TFPs with a quality service to support the formulation, monitoring, and evaluation of projects, programs, and policies in the DRC and Central Africa

- ✓ Economic and financial evaluation of the NTSIO agroforestry system/model in order to assess opportunities, feasibility and modalities for replications of the model by public and private sector actors (EU/ASIST 2019);
- ✓ Climate Neutrality, Conservation and Green Economy based on an inclusive rubber industry in the Lomela and Lodja territories (Sankuru Province, ENABEL-UE 2023)

- ✓ Strengthening the resilience to climate change of the local communities of Luki and Mai Ndombe in DRC in partnership with WWF (EU 2019-2021)
- ✓ Feasibility study for a rice-growing and agro-forestry perimeter in Katanga (Groupe Forrest 2021) Profile of food systems in the Democratic Republic of Congo (FAO/UE/CIRAD 2022)



IX. NATIONAL, REGIONAL AND INTERNATIONAL CHALLENGES

- ✓ Development of **research activities** and **follow-up of doctoral students and researchers** in partnership with international and regional research programs
- ✓ **Presence of permanent assistants** in the 2 Biosphere Reserves of the DRC (Luki and Yangambi) with research stations.
- ✓ **Diversification of the training offer** for graduates (AGRINATURA / ERAIFT) and the organization of continuing education at ERAIFT and in situ.
- ✓ **Promotion of bilingualism, French and English**, for all the activities of the school (teaching, research, continuing education ...)
- ✓ Development of online degree and continuing education courses: **E-learning!**
- ✓ Support for the development of the ERAIFT alumni network or **RADDI**
- ✓ Support for the creation of **IRAIFT in Abidjan**, which will be responsible for similar training in West Africa (dry dense forests, Sahelian and savannah forests)
- ✓ Development of **ERASMUS in the Congo Basin** (the Uniniversity of Kisangani (UNIKIS)-DRC, Garoua Wildlife School (GWS) and the Universities of Dschang and Yaounde 1 in Cameroon, the Gabon National School of Water and Forestry (GNSWF) and the Great Lakes (African Leadership University-Rwanda)
- ✓ Cooperation with the **South African Wildlife College** in Nelspruit and the College of African Wildlife Management (CAWM) in Mweka, Tanzania

An aerial photograph of a vast, dense tropical rainforest. The canopy is a thick, textured layer of green, with some areas showing more vibrant orange-brown hues, possibly from specific tree species or seasonal changes. The forest extends to the horizon under a bright, slightly hazy sky. A large black speech bubble is overlaid on the left side of the image.

THANK YOU
for listening!

www.eraift-rdc.org